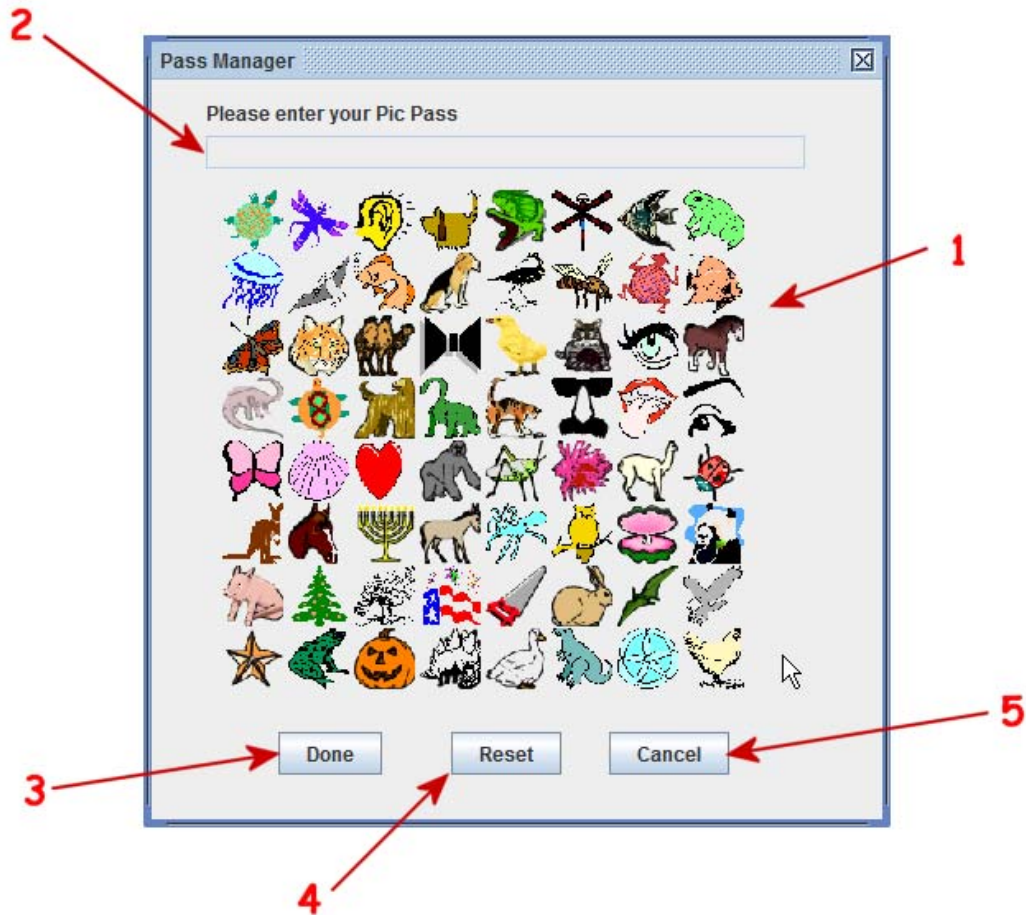
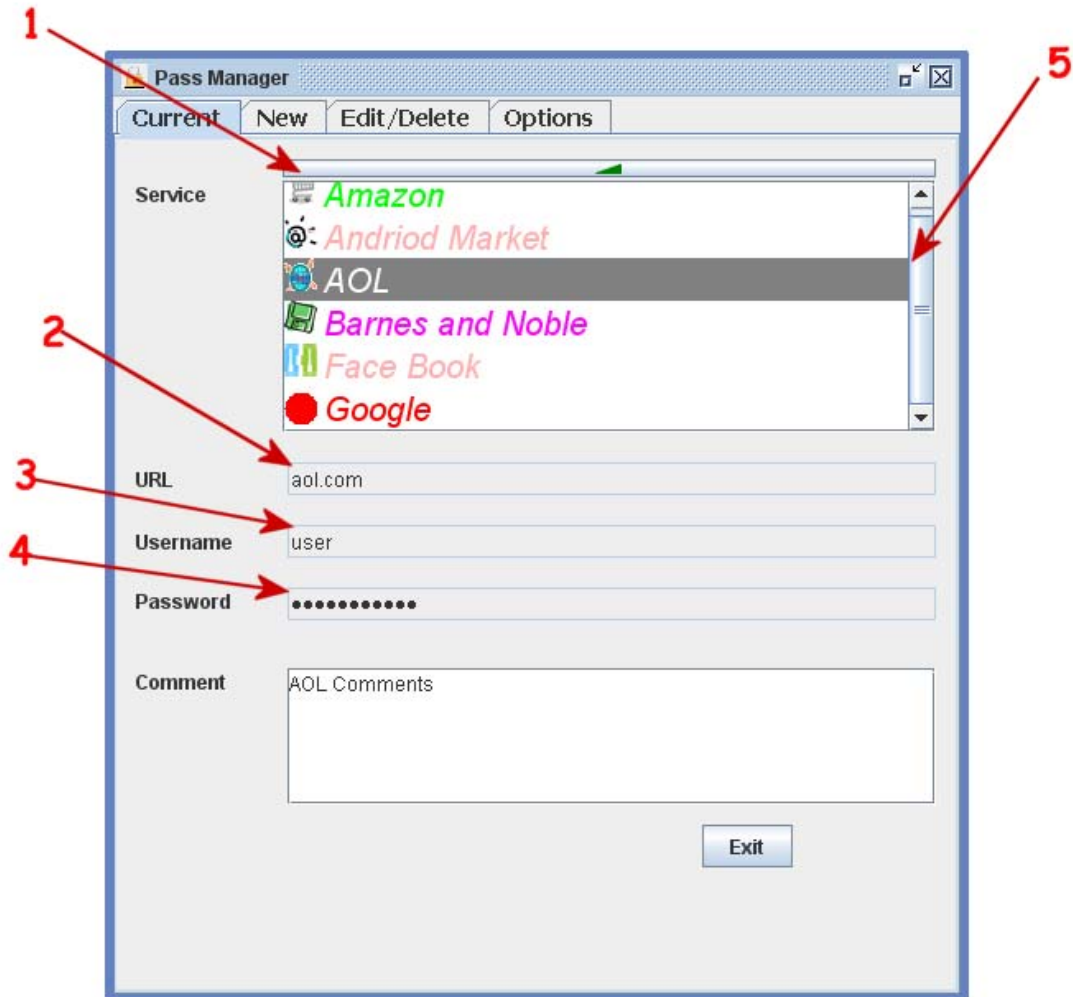


## Pic Password



1. Click on the icons to form your Pic password for accessing the Pass Manager.
2. As you click on the icons to form your password this field will indicated by showing an • for each icon
3. Click when you have completed entering your pic password
4. Click to reset and start over enter the pic password
5. Cancel will exit application

## Current Tab



1. Click to sort, default ascending
2. Click to copy URL to clipboard
3. Click to copy user name to clipboard
4. Click to copy password to clipboard, options tab allows to change this field to view password if desired

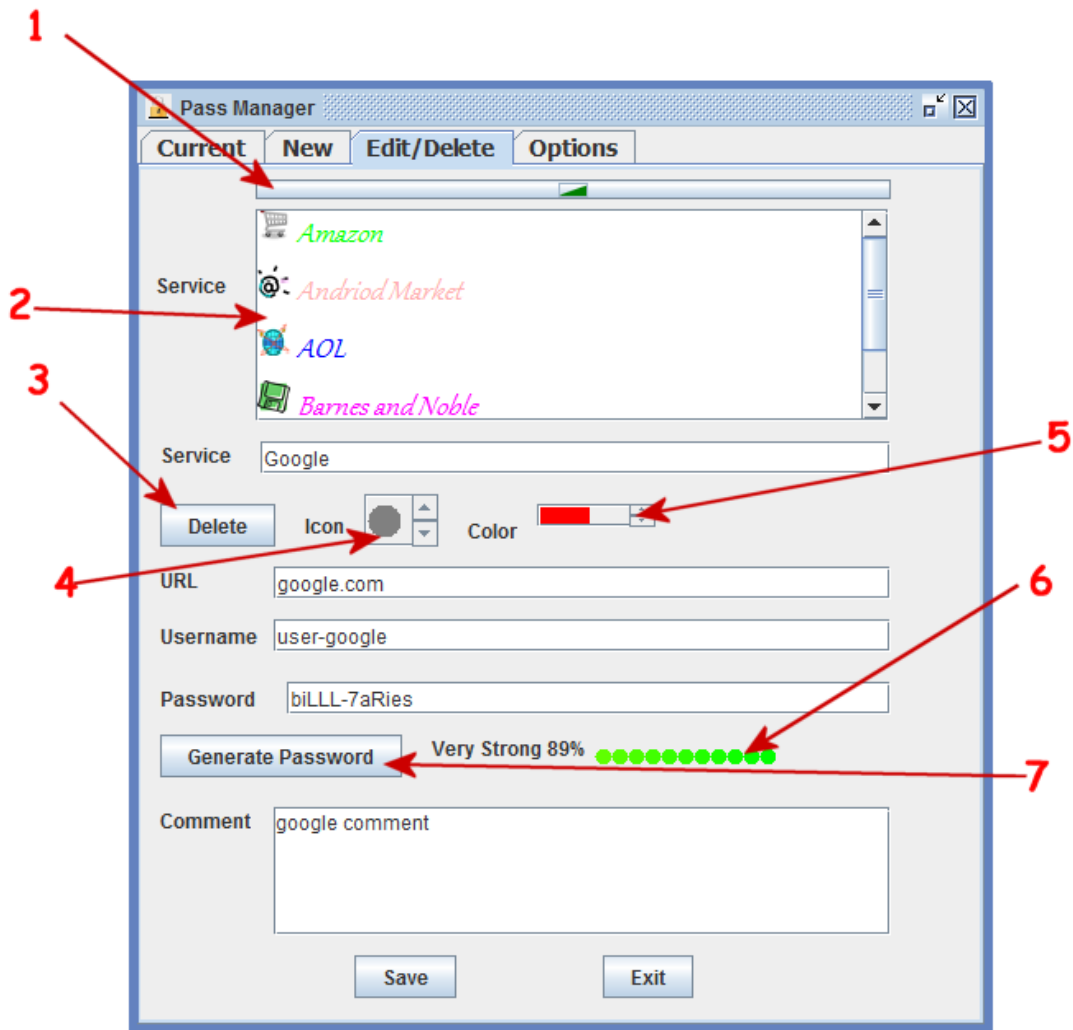
## New Tab

The image shows a screenshot of the 'Pass Manager' application window, specifically the 'New' tab. The window has a title bar with the text 'Pass Manager' and standard window controls. Below the title bar are four tabs: 'Current', 'New', 'Edit/Delete', and 'Options'. The 'New' tab is active. The form contains several input fields and controls:

- Service:** A text input field with a red arrow labeled '1' pointing to it.
- Icon:** A button with a circular icon and a red arrow labeled '2' pointing to it.
- Color:** A color selection control with a black square and a red arrow labeled '4' pointing to it.
- URL:** A text input field.
- User Name:** A text input field.
- Password:** A text input field.
- Generate password:** A button with a red arrow labeled '3' pointing to it.
- Very Weak 0%:** A text label next to a password strength meter consisting of 10 red dots, with a red arrow labeled '5' pointing to it.
- Comment:** A large text area.
- Save:** A button at the bottom center.
- Exit:** A button at the bottom right.

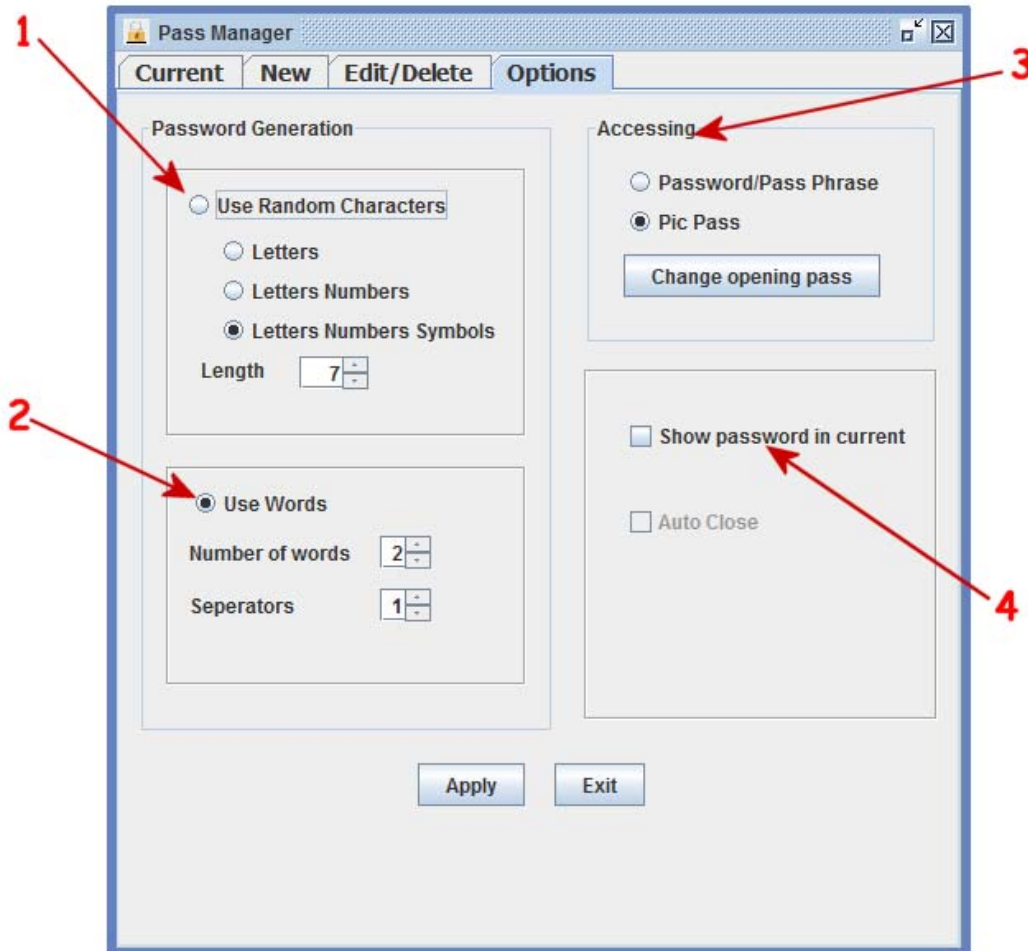
1. Enter name of service, this can not be blank
2. Pick icon, icon images can be added to application by adding a PNG file smaller than 100 by 100 to directory Pass Manager is in.
3. Click to generate password, Password properties are set in options tab, you can also just enter your own
4. Pick text color
5. Password Strength Meter will indicate password strength.

## Edit/Delete Tab



1. Click to sort, default ascending
2. Scroll to service and click
3. Click to delete the service
4. Change service icon
5. Change text color
6. Pass word strength meter
7. Click to generate a new password

## Options Tab



1. When generating password use only random characters, you can pick only letters, letters and numbers, or letters numbers and symbols
2. Use words from the Diceware word list to form password
3. The Pass Manager accessing password, set to use the icon password or standard password / passphrass
4. Choose if you want to display the password of the service in the current tab